

# CUTTING

## FOOD PUMP

The Pomac CP-AGF program comprises a range of stainless steel pumps, suited for pumping potatoes, vegetables and fruits, with minimal damage.

The pumps can be supplied with a single channel or a dual channel impeller. The impeller hub is mounted directly to the motor shaft, which results in a minimal overhang and length. The impeller can easily be removed without dismantling the pump casing.

The pump casing is fitted with inspection covers, allowing inspection of the pump interior without the pump needing to be removed and dismantled.



## CONSTRUCTION

- Stainless steel motor shroud supplied as standard
- Close-coupled set-up on stainless steel base
- Internal mechanical seal (SiC/SiC EPDM), fitted with oil bath
- Impeller hub mounted directly to the motor shaft
- Pump casing position can rotate 45 degrees or according to client specs
- Pump casing fitted with inspection covers
- Pump casing fitted with drain

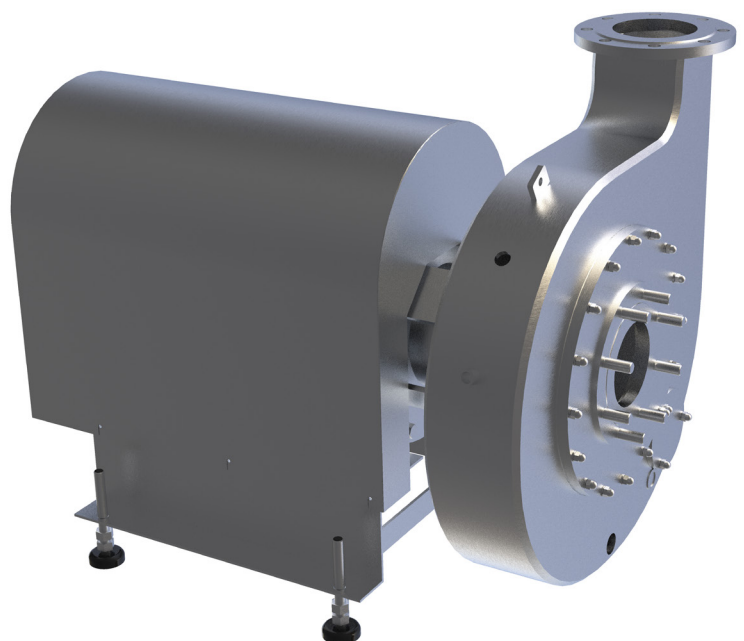
## SIZE

The pumps are available in 4 build sizes:

- 500 (NW 100)
- 750 (NW 150)
- 1000 (NW 200)
- 1250 (NW 250)

Max. solids passage [mm]:

- 500: 100
- 750: 150
- 1000: 200
- 1250: 250

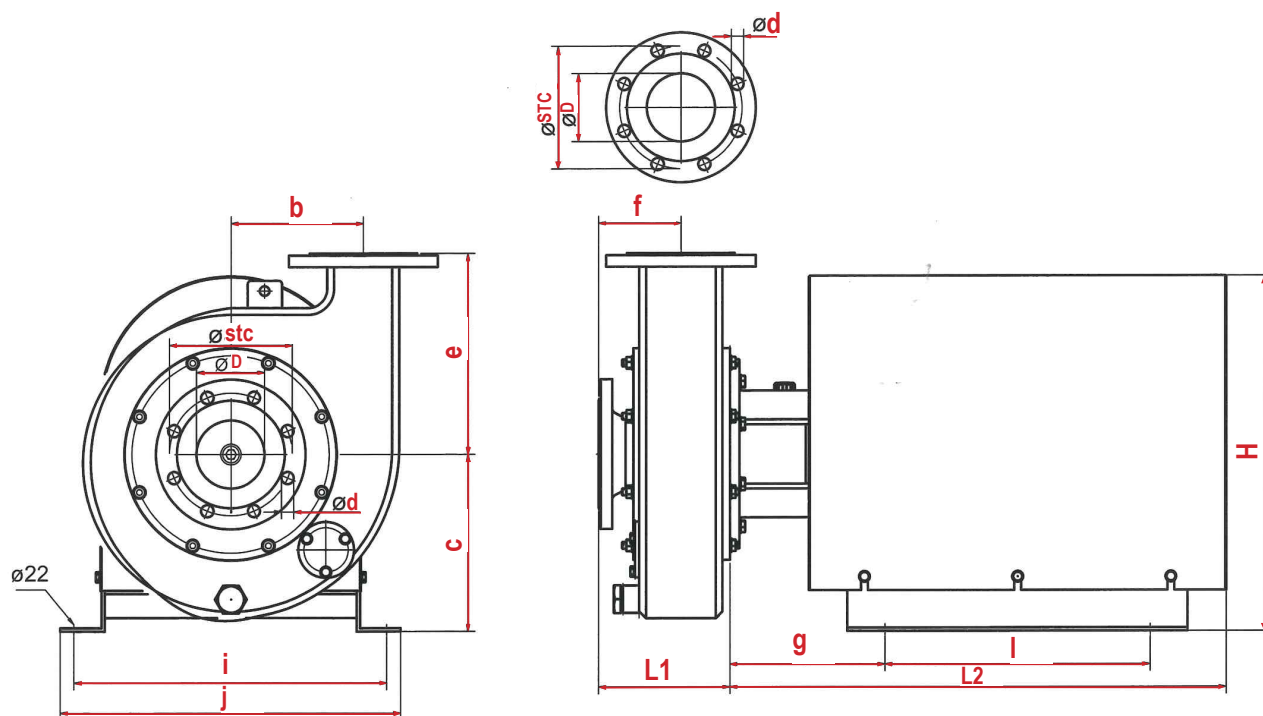


CUTTING

# FOOD PUMP



## DIMENSIONS



SIZE	RPM	P (kW)	b	d	D	e	f	STC	L1	c	g	H	i	j	l	L2
50044	750	5,5	195	18	100	295	120	180	193	260	227	521	460	500	390	729
50044	750	7,5	195	18	100	295	120	180	193	260	227	521	460	500	390	729
50044	750	11,0	195	18	100	295	120	180	193	xxx	xxx	xxx	460	500	xxx	xxx
50044	1000	11,0	195	18	100	295	120	180	193	260	227	521	460	500	390	729
75066	750	18,5	325	22	150	460	160	240	265	410	200	786	586	626	540	960
75066	750	22,0	325	22	150	460	160	240	265	410	200	786	586	626	540	960
75066	1000	30,0	325	22	150	460	160	240	265	xxx	xxx	xxx	xxx	xxx	xxx	xxx
100088	750	30,0	390	28	200	590	200	360	340	xxx	xxx	xxx	xxx	xxx	xxx	xxx
100088	1000	37,0	390	28	200	590	200	360	340	xxx	xxx	xxx	xxx	xxx	xxx	xxx

xxx = size depends on motor make



208.677.2222

sales@southernfabricationworks.com

